



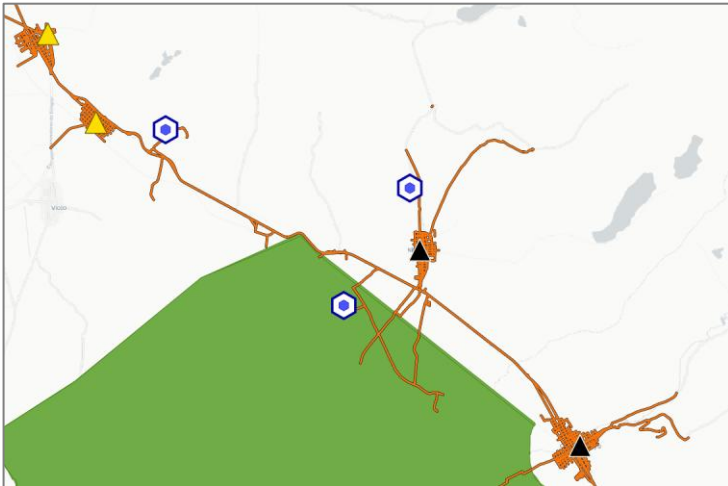
# NaLaMap

Natural Language Mapping

*Presentation at the Geo4Impact Conference 2025, Paris, 27<sup>th</sup> of May 2025, Johannes Schielein*

# Why use Geodata in the Public Sector?

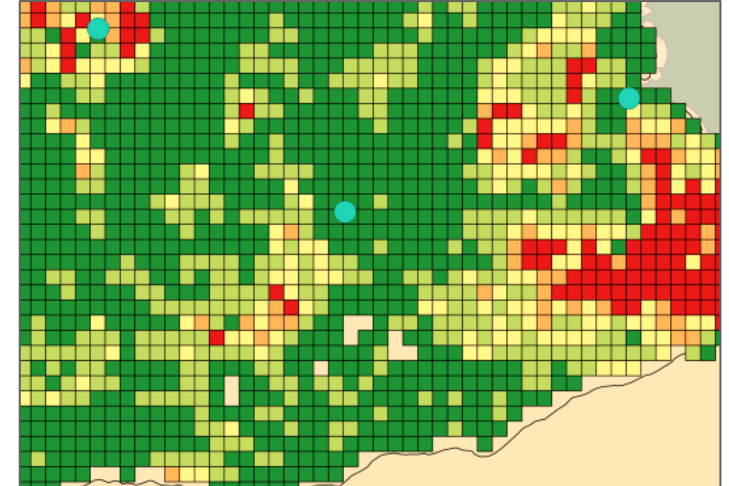
## Improve Targeting



## Simplify Monitoring



## Quantify Impacts



*Image Sources: OSM, Google/MAXAR, 3IE*

# Challenges



Expert Knowledge



High Costs



Limited Resources

# Solutions



Community



Open Access



Technology



# Discussed Improvements



Allow (custom)  
Backend via Chat



Add (more)  
Open-Data Portals



Add more tools such as  
„Automated Styling“

# Outlook

- NaLaMap is currently a **prototype**.
- **Open-Source release** scheduled for Juli 2025 (FOSS4G)
- We are currently **looking for collaborators, data partnerships and funding opportunities** to further develop the application.



NaLaMap

Natural Language Mapping

Thank you very much!

[www.nalamap.org](http://www.nalamap.org)

[info@nalamap.org](mailto:info@nalamap.org)