

Enhancing Geospatial Data Management for International Development:

Open Project Location and Protected Areas Models

Frey, G.*; Chow, C.; Basukala, A.; Karaman, Z.; Schielein, J; Bergtold, S.

KfW Development Bank - Open Data Team GeoData Desk fz_geodata-desk@kfw.de

Introduction

In the realm of international development, accurate and accessible geospatial data is crucial for effective project management and evaluation (**Figure 1**). The KfW Development Bank has developed the Open Project Location Model, which is based on the International Aid Transparency Initiative (IATI) standard. This model allows for the consistent collection of location-specific information, enabling stakeholders to assess the relevance, progress, and impacts of development projects (**Figures 2-3**).

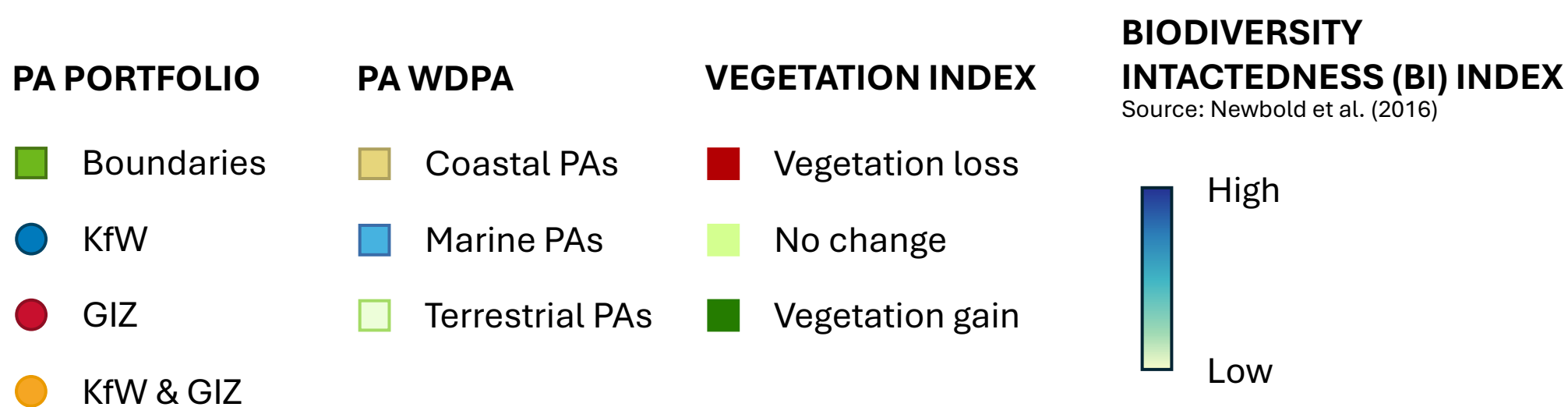
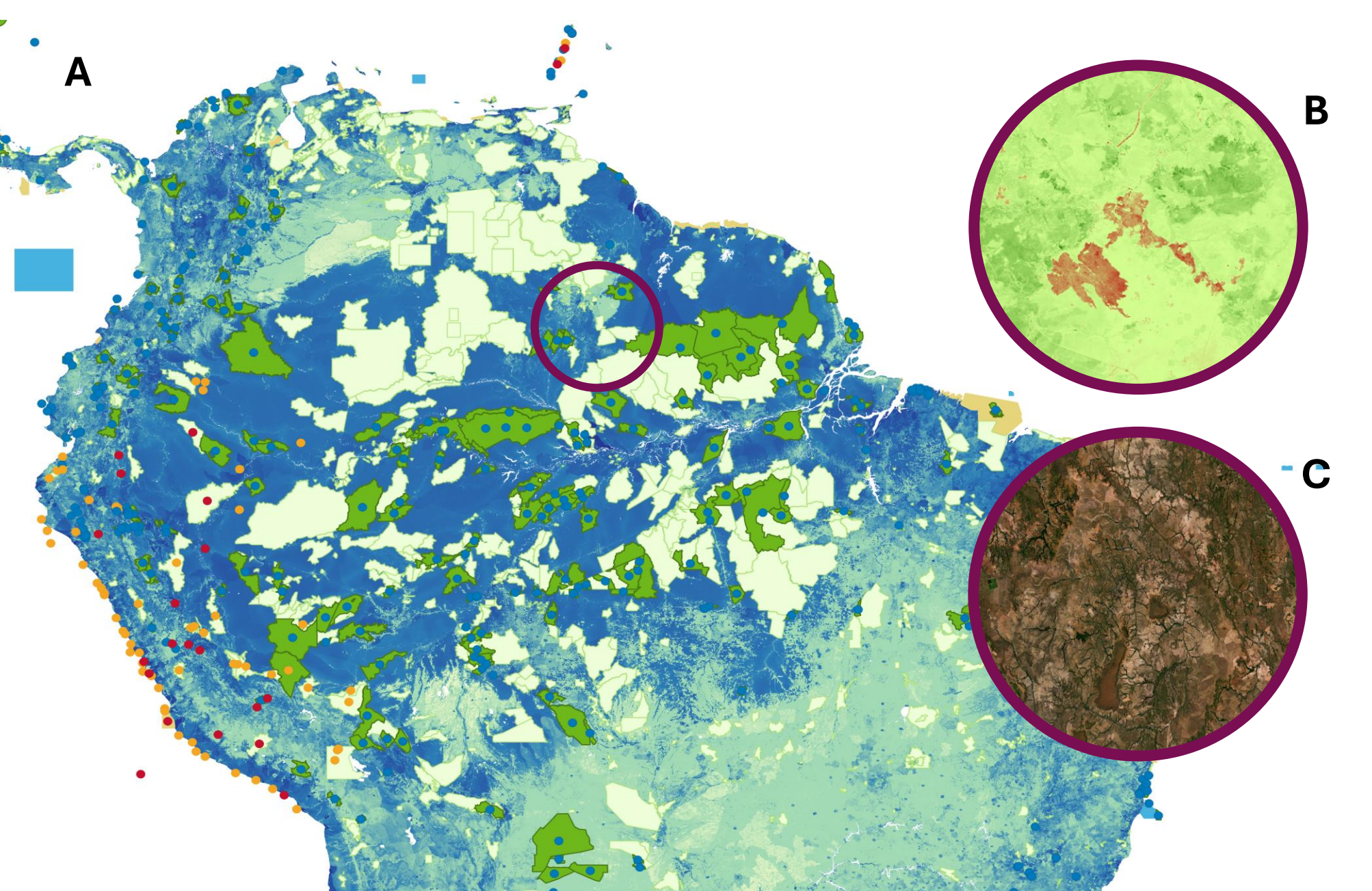


Figure 2. Examples of derived insights based on combining multiple data sources. **A.** BI Index with Protected Areas (PA); **B.** Vegetation Index based map; **C.** Satellite imagery for remote monitoring.

Highlights

The integration of these models allows for enhanced cooperation between KfW, GIZ, and BMZ, facilitating better reporting and strategic assessments. Furthermore, there is potential for collaboration with other institutions, such as the French Development Agency (AFD), to expand the reach and impact of these geospatial initiatives.

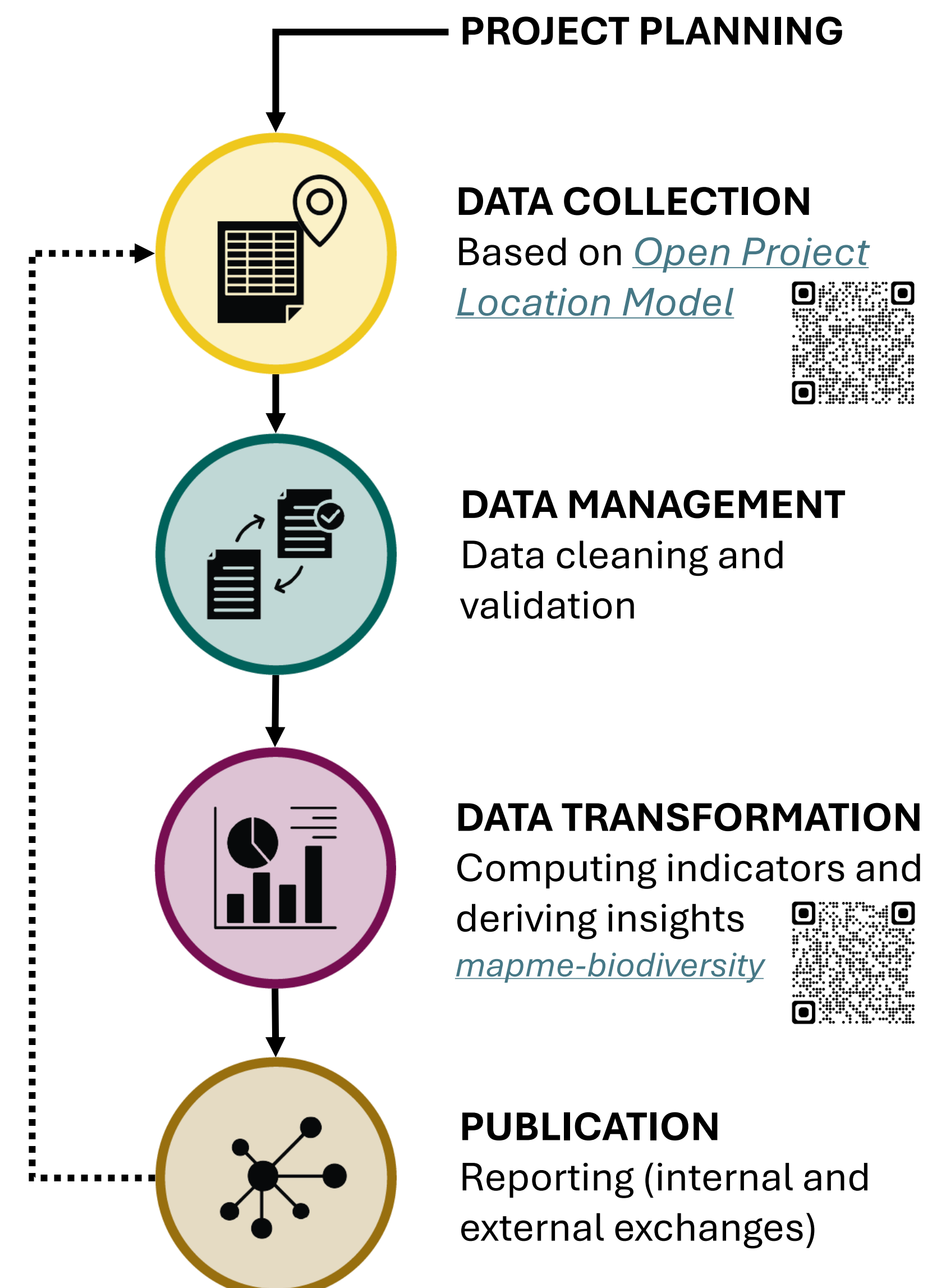


Figure 1. Data processing workflow components supported by GeoData Desk.

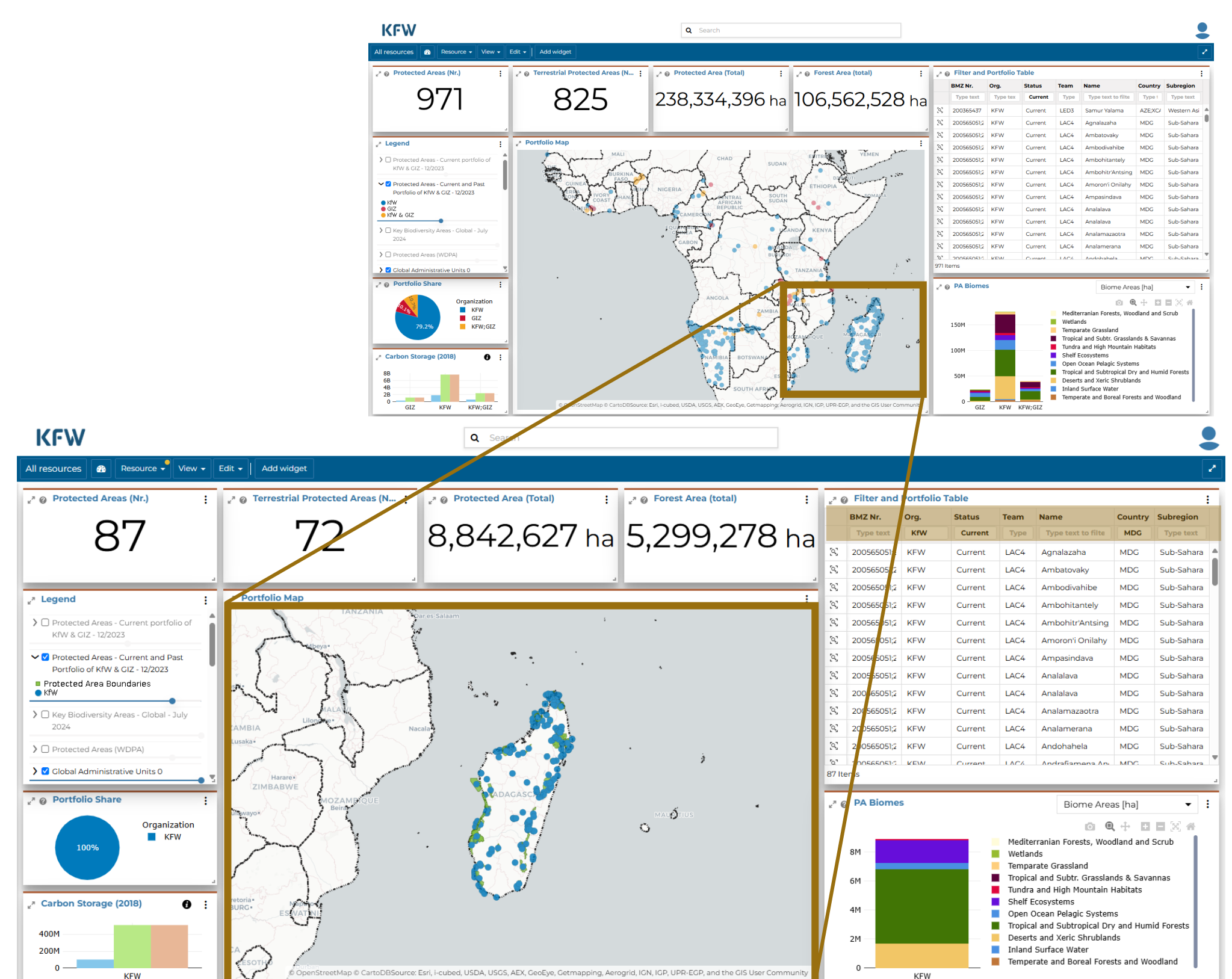


Figure 3. Apply custom filters in responsive dashboard to see updates across multiple data summary formats (e.g. graphs, tables, maps).